

Service and Support

Install sealing ring 78008

DOCUMENT ID: 8228

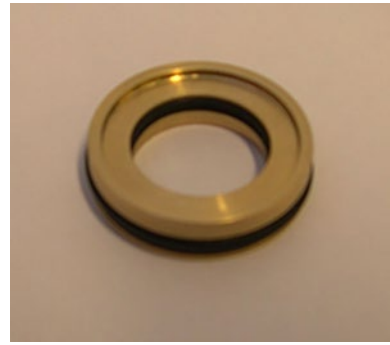
REVISION: I

DATE: 2025

LANGUAGE: EN



This kit is for replacing the sealing ring on Sleipner helm pumps from 2005 and later. The kit consists of a brass ring with pre-mounted outer and inner O-rings.



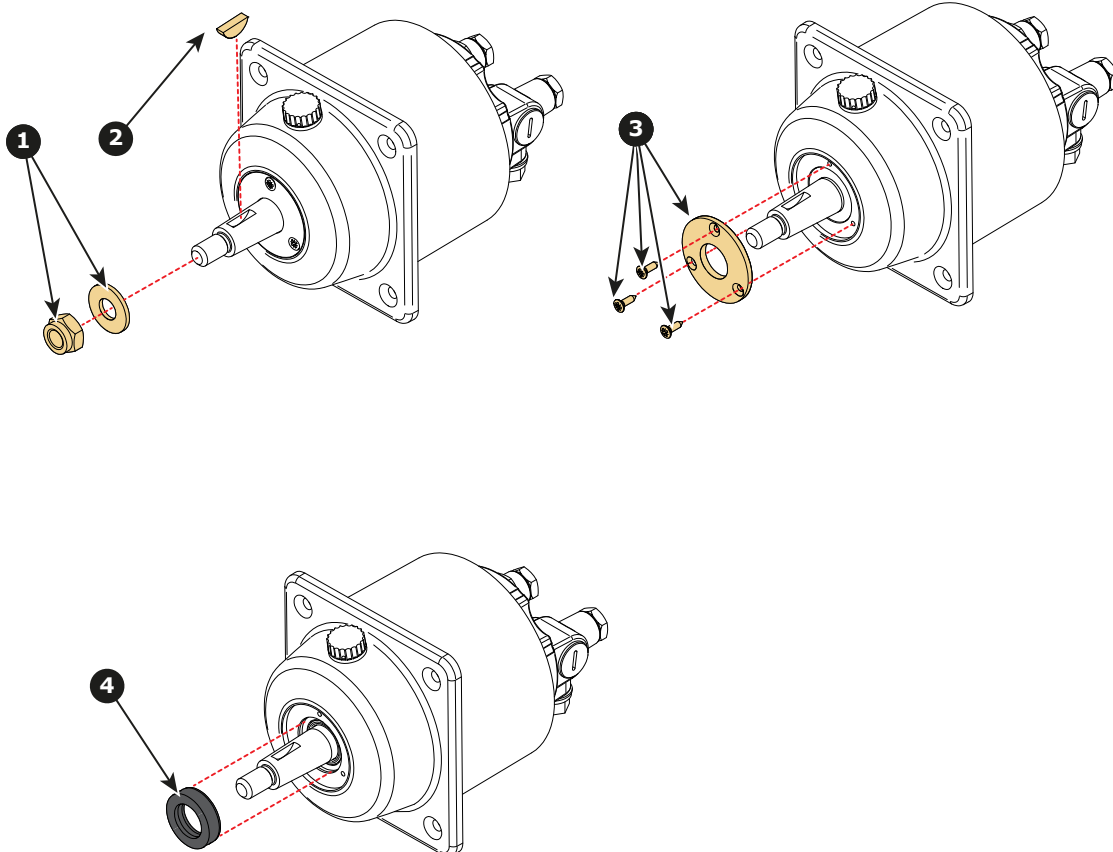
Remove the old shaft seal

NOTE:

When removing the shaft seal, the oil in the helm pump will leak.

To avoid this, it is a possibility to drain the oil from the helm pump reservoir. Remove the filler cap, and drain using a syringe (without the needle).

- Remove the Center nut, and the washer. (Reference 1).
- Remove the woodruff key from the shaft. (Reference 2).
- Remove the three screws holding the shaft cover, and remove the cover. (Reference 3).
- Carefully remove the sealing ring from the helm pump. (Reference 4).
- Use an appropriate pointed tool for this purpose. Ensure not to create marks in the shaft or pump housing when using the tool.



MG_1095

Install the sealing kit

NOTE:

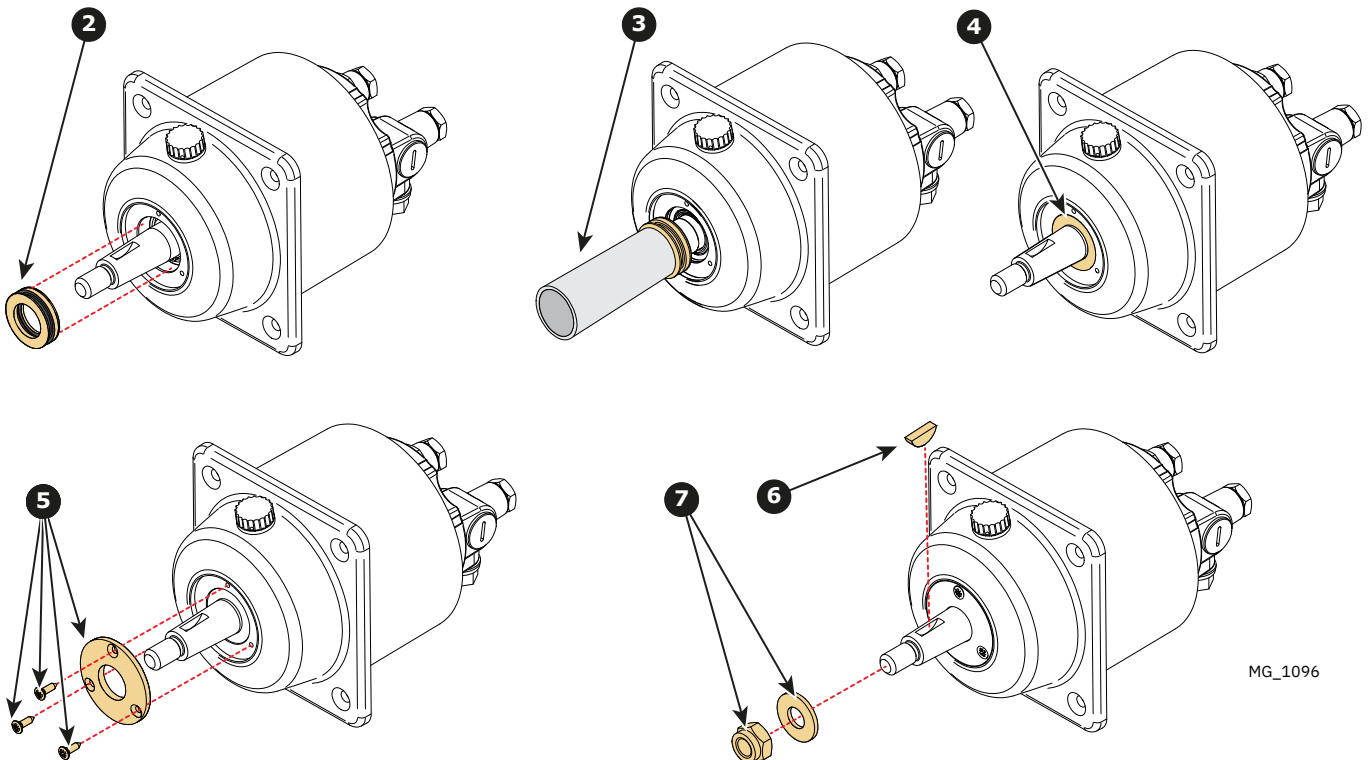
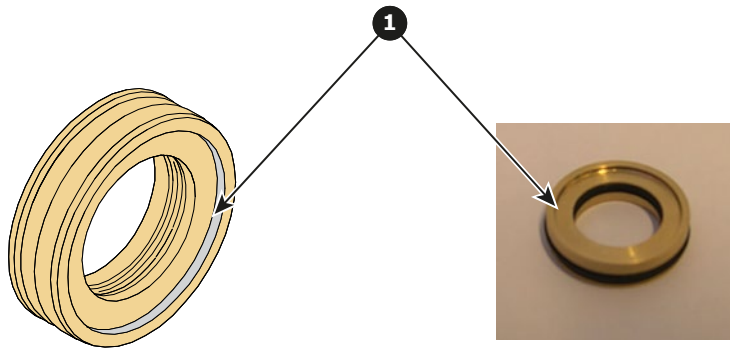
If there are any marks or scratches on the shaft, brush the shaft with a fine grit sandpaper (grit 2000 or more). Do also remove any burrs from the keyway in the shaft. All burrs or scratches will damage the seal and cause continued leakage.

- Wipe off any dirt from the shaft.
- Apply a thin film of oil on the shaft before entering the sealing.

IMPORTANT:

When installing the sealing, ensure that the side of the sealing featuring a groove or notch (*Reference 1*) is oriented towards (facing) the pump.

- Slide the new sealing on the shaft. (**Reference 2**).
- It is recommended to use a cylindrical tool (for example a socket) during installation to ensure the seal is pressed evenly onto the shaft. This helps prevent the seal from becoming misaligned or mounted at an angle. (**Reference 3**).
- Press the sealing until it is completely in position. (**Reference 4**).
(The sealing shall be flush with the helm pump housing.)
- Slide the cover onto the shaft, and secure it with the three screws (**Reference 5**).
- Check oil level and replenish when necessary.
- Reinstall the woodruff key (**Reference 6**), and enter the steering wheel. Secure with the washer and nut. (**Reference 7**).
- Check for oil leak.



MG_1096

© **Sleipner Motor AS**, All rights reserved

The information given in the document was right at the time it was published. However, Sleipner Motor AS cannot accept liability for any inaccuracies or omissions it may contain. Continuous product improvement may change the product specifications without notice. Therefore, Sleipner Motor AS cannot accept liability for any possible differences between product and document.

**Learn more about our products at
www.sleipnergroun.com**



SLEIPNER MOTOR AS

P.O. Box 519

N-1612 Fredrikstad

Norway

www.sleipnergroun.com

Made in Norway